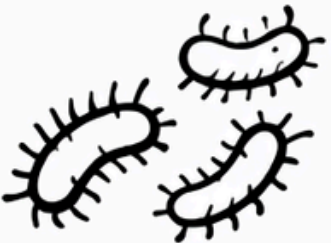


Diagram Workbook

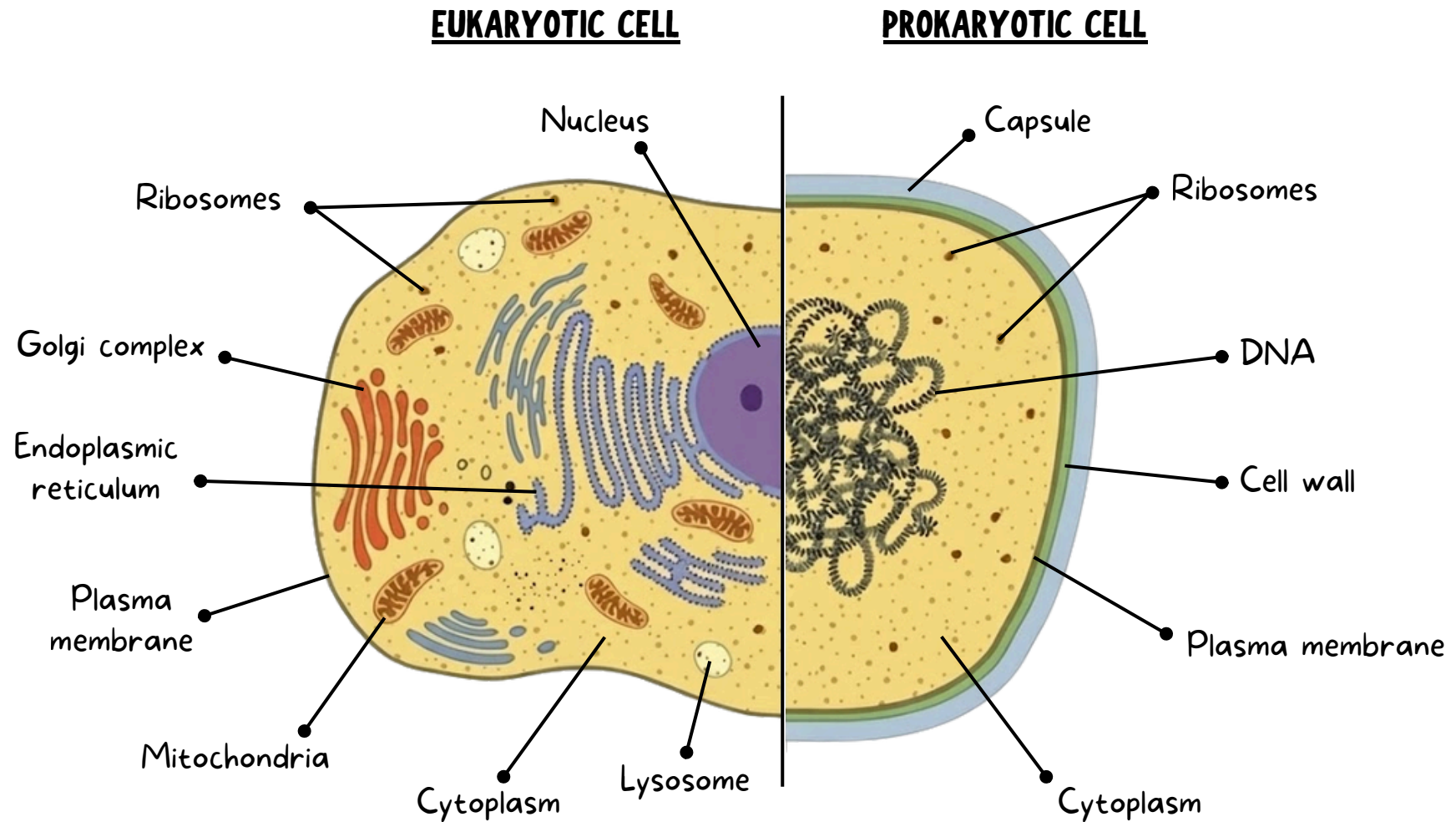
NEET infocademy



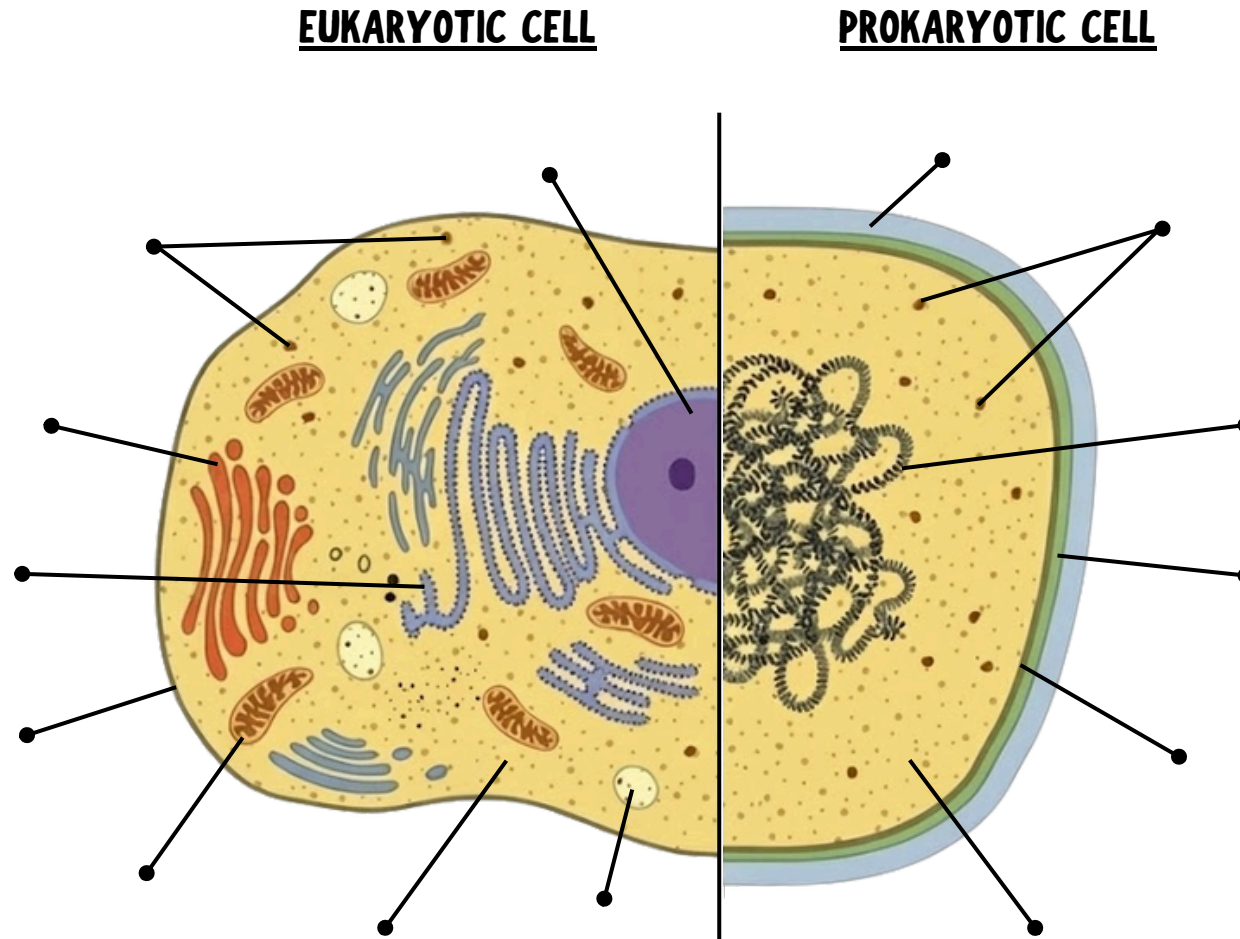
Index

- Eukaryotes And Prokaryotes [3]
- Mitochondria & Chloroplast Structure [8]
- Monocot Root & Dicot Root [13]
- Leaf Anatomy [18]
- Stomatal Apparatus [23]
- Phloem & Xylem Structure [26]
- Embryo Of Dicot & Monocot Seeds [30]
- Process Of Photosynthesis [33]
- Stages Of Photosynthesis [37]
- C4 Cycle [37]
- Calvin Cycle [40]
- Pollen Grain & Pollen Tube Growth [44]
- Structure Of Flower (L.s.) [48]
- Embryo Sac Of Angiosperms [48]
- DNA Double Helix [53]
- Mitosis & Meiosis Diagrams [54]
- Menstrual Cycle Flow Chart [58]
- Pedigree Analysis Symbols [59]
- DNA Replication Fork [63]
- Replication, Transcription & Translation [67]
- Lac Operon Model [70]
- rDNA Technology Steps [73]
- Human Heart (Chambers, Valves) [77]
- Cardiac Cycle [83]
- Human Brain [87]
- Structure Of Kidney [93]
- Respiratory System [98]
- Ovulation Process [103]
- Urinary System & Nephron [107]
- Reflex Action [111]
- Sperm Cell [114]
- Pelvic Girdle & Right Lower Limb [118]
- Pectoral Girdle & Right Upper Limb [118]
- Rib Cage [123]
- Bone Of Spine [123]
- Nerve Cell & Synapse [128]
- Human Skull [133]
- Structure Muscle [138]
- Endocrine Glands & The Hormones [142]
- Human Reproductive Organs [146]
- Placenta Structure [155]
- Human Eye [155]
- Anatomy Of The Ear [160]
- Gametogenesis [164]
- Digestive Enzyme Locations [168]

EUKARYOTES AND PROKARYOTES



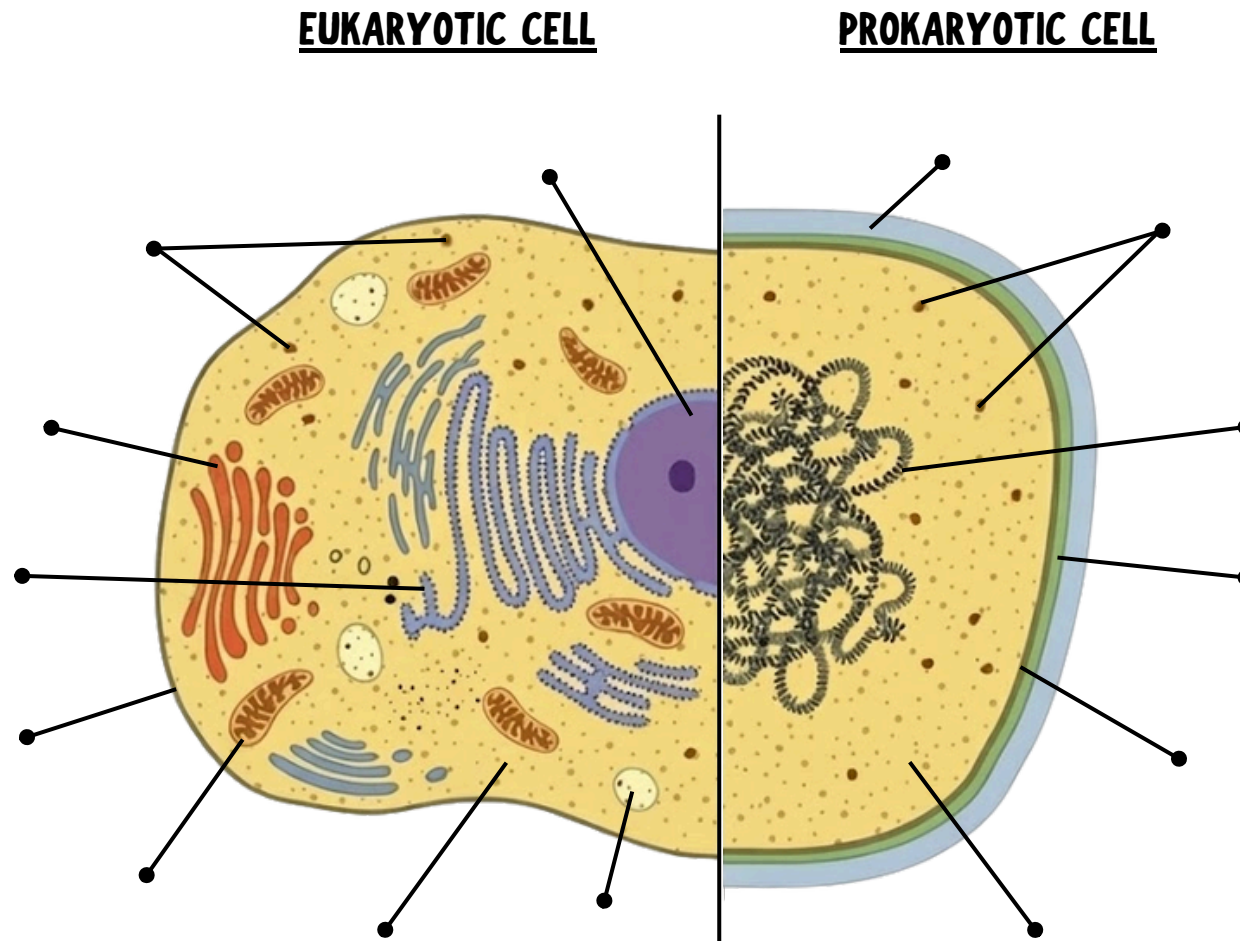
EUKARYOTES AND PROKARYOTES



EUKARYOTIC CELL

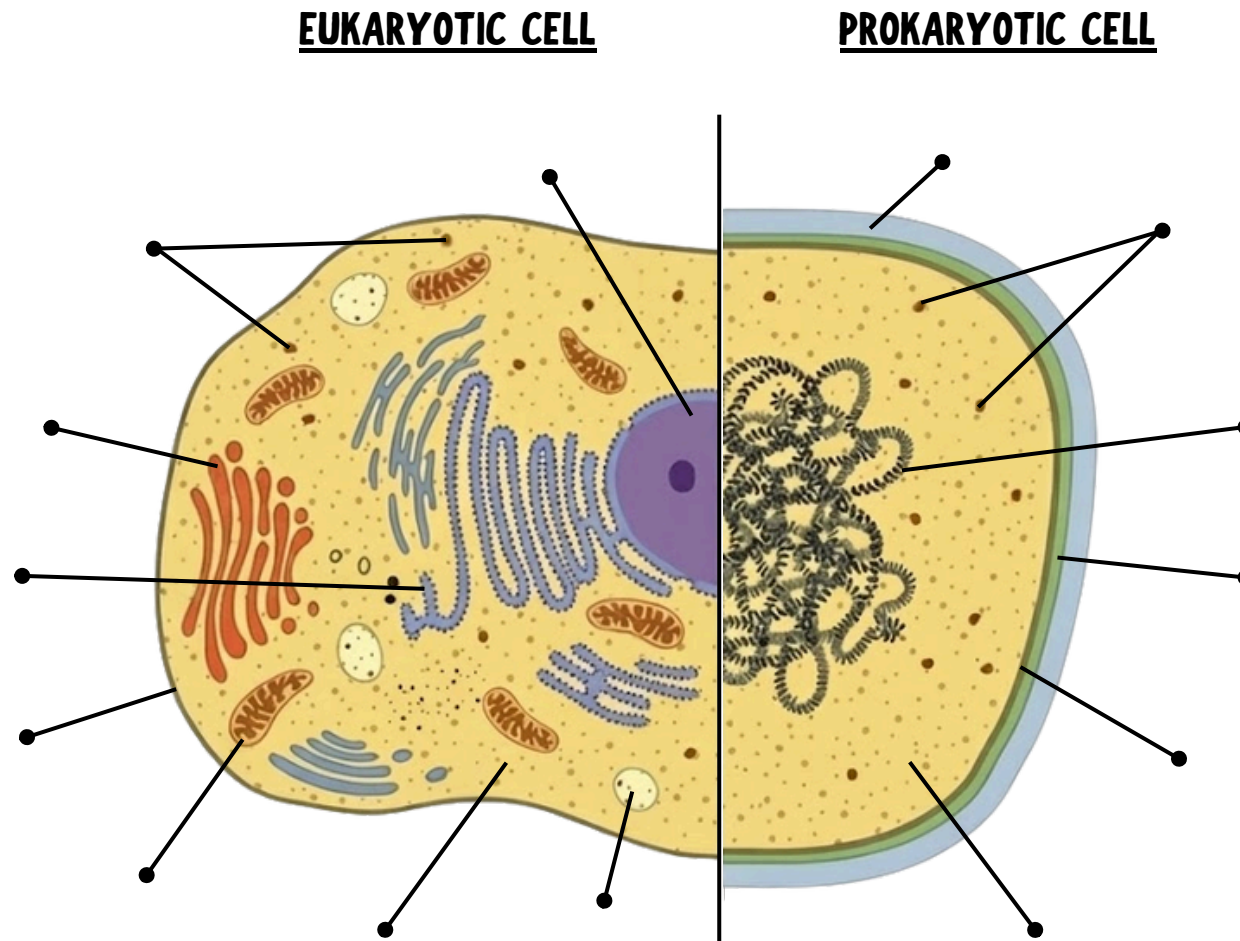
PROKARYOTIC CELL

EUKARYOTES AND PROKARYOTES



NEET INFOCADEMY

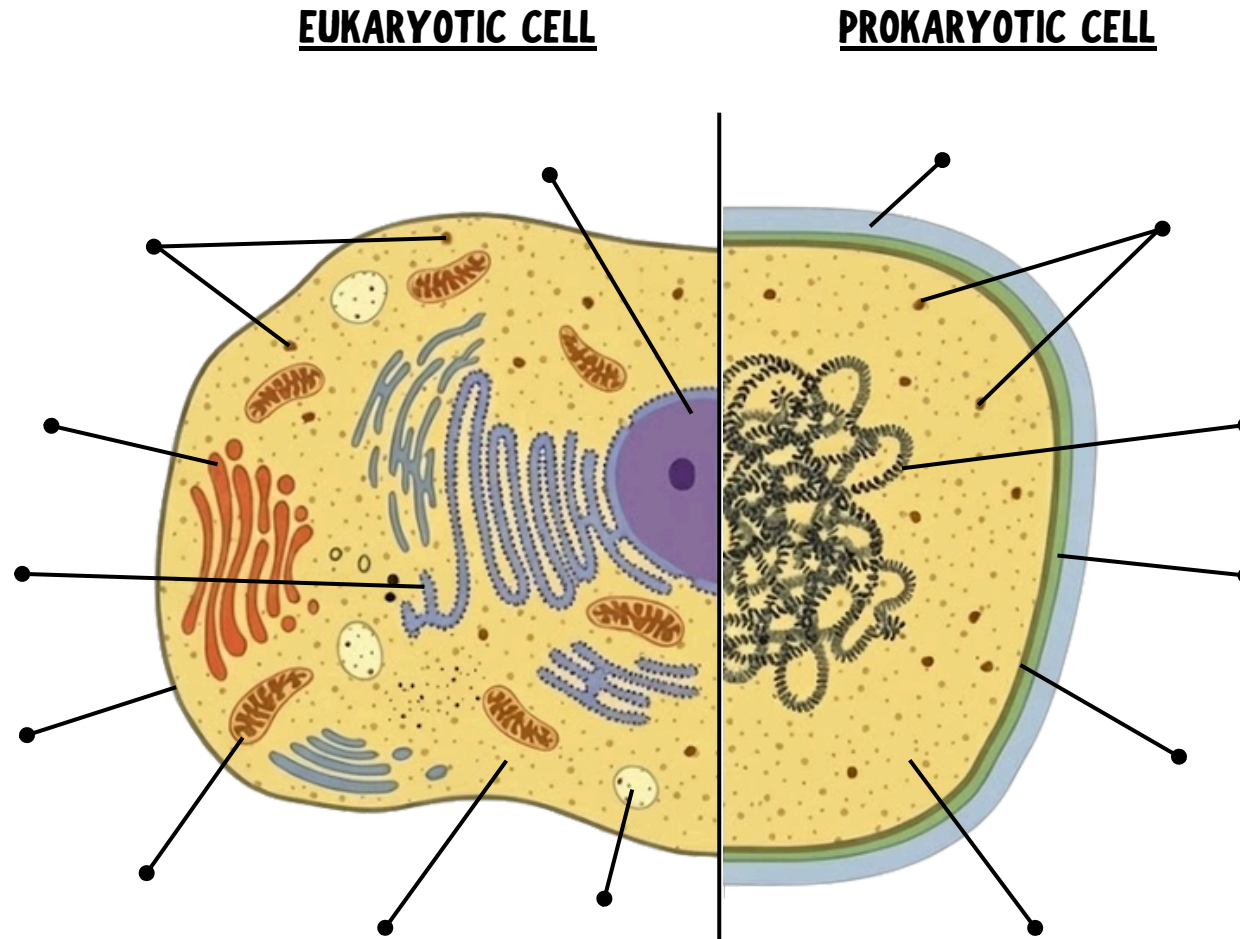
EUKARYOTES AND PROKARYOTES



EUKARYOTIC CELL

PROKARYOTIC CELL

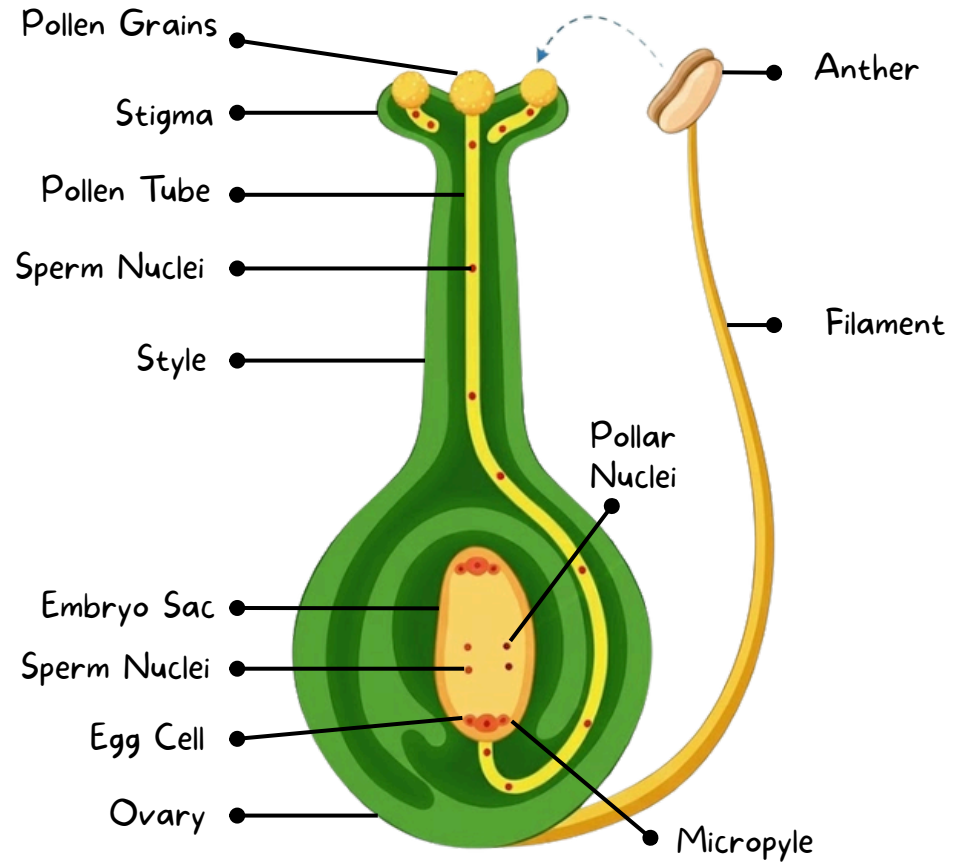
EUKARYOTES AND PROKARYOTES



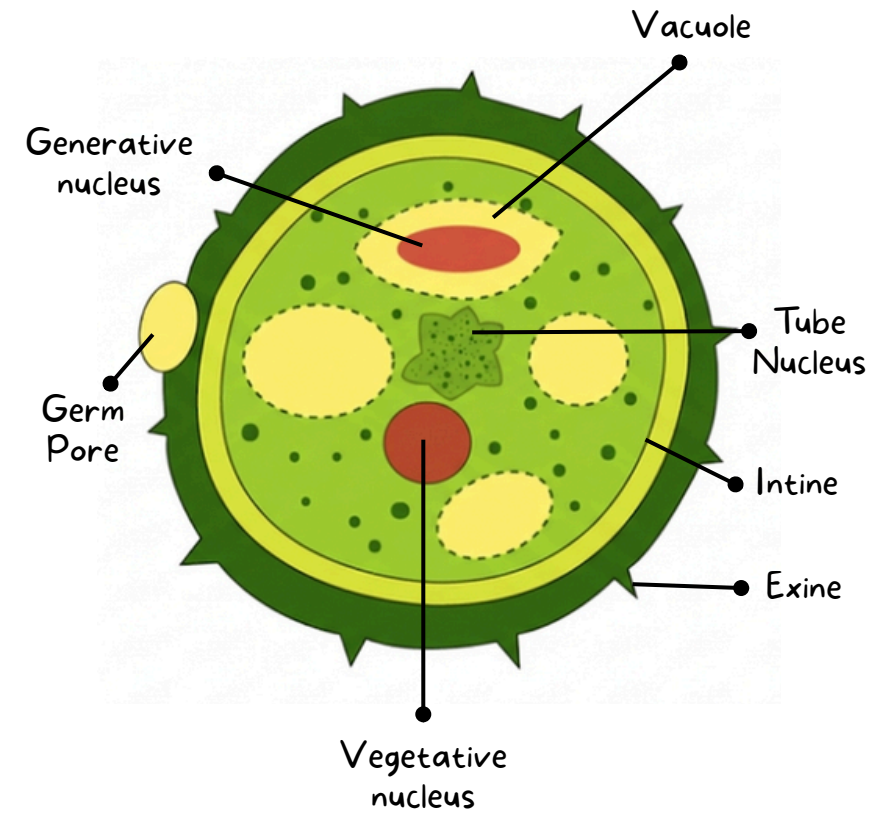
EUKARYOTIC CELL

PROKARYOTIC CELL

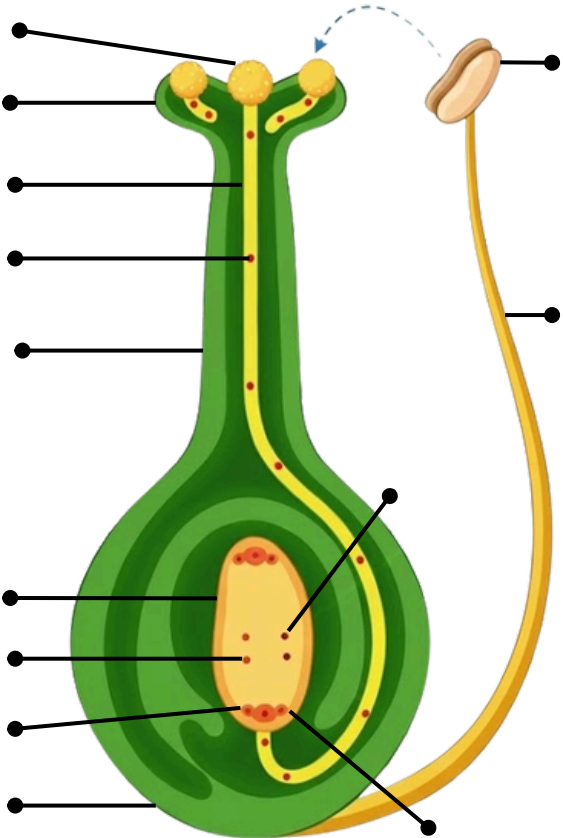
POLLEN GRAIN & POLLEN TUBE GROWTH



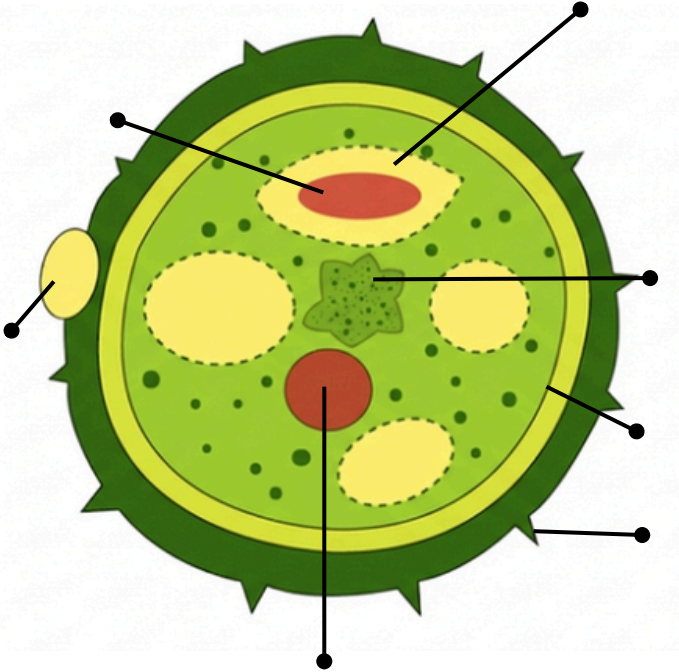
POLLEN GRAIN



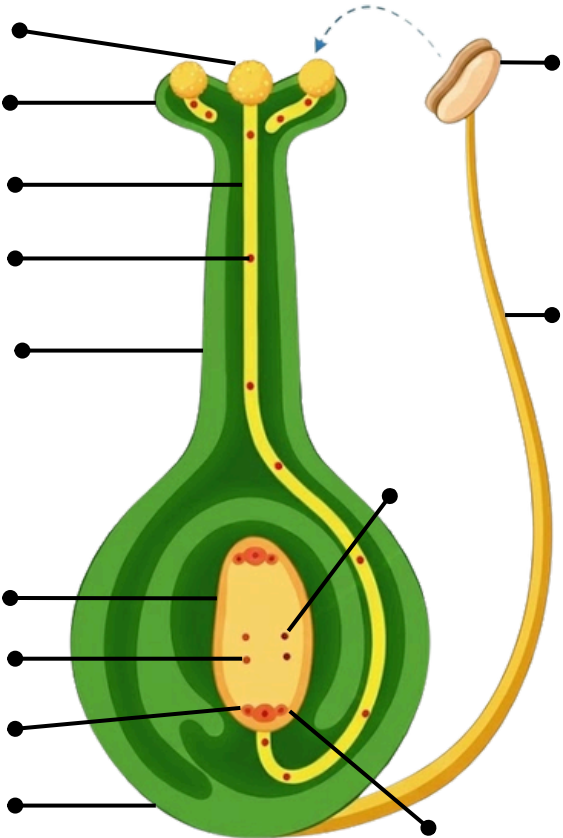
POLLEN GRAIN & POLLEN TUBE GROWTH



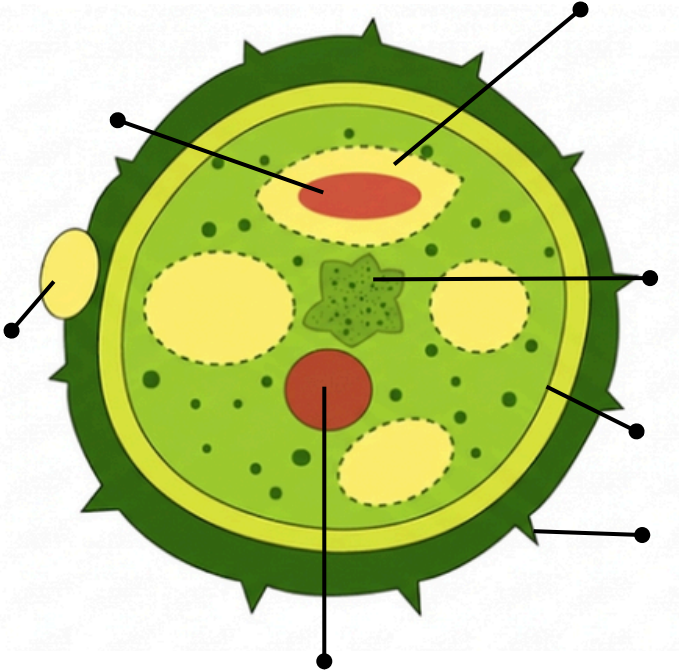
POLLEN GRAIN



POLLEN GRAIN & POLLEN TUBE GROWTH

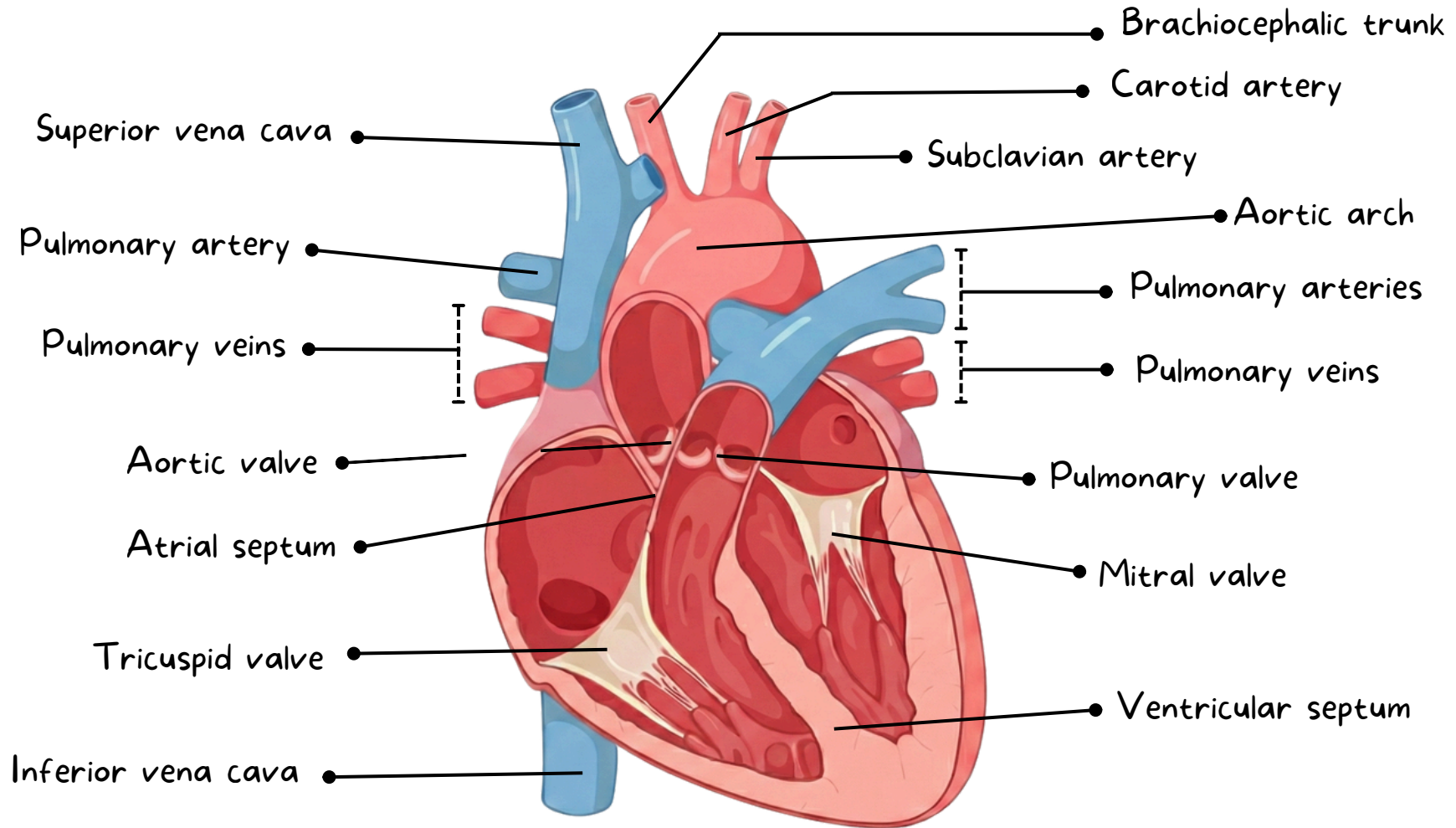


POLLEN GRAIN



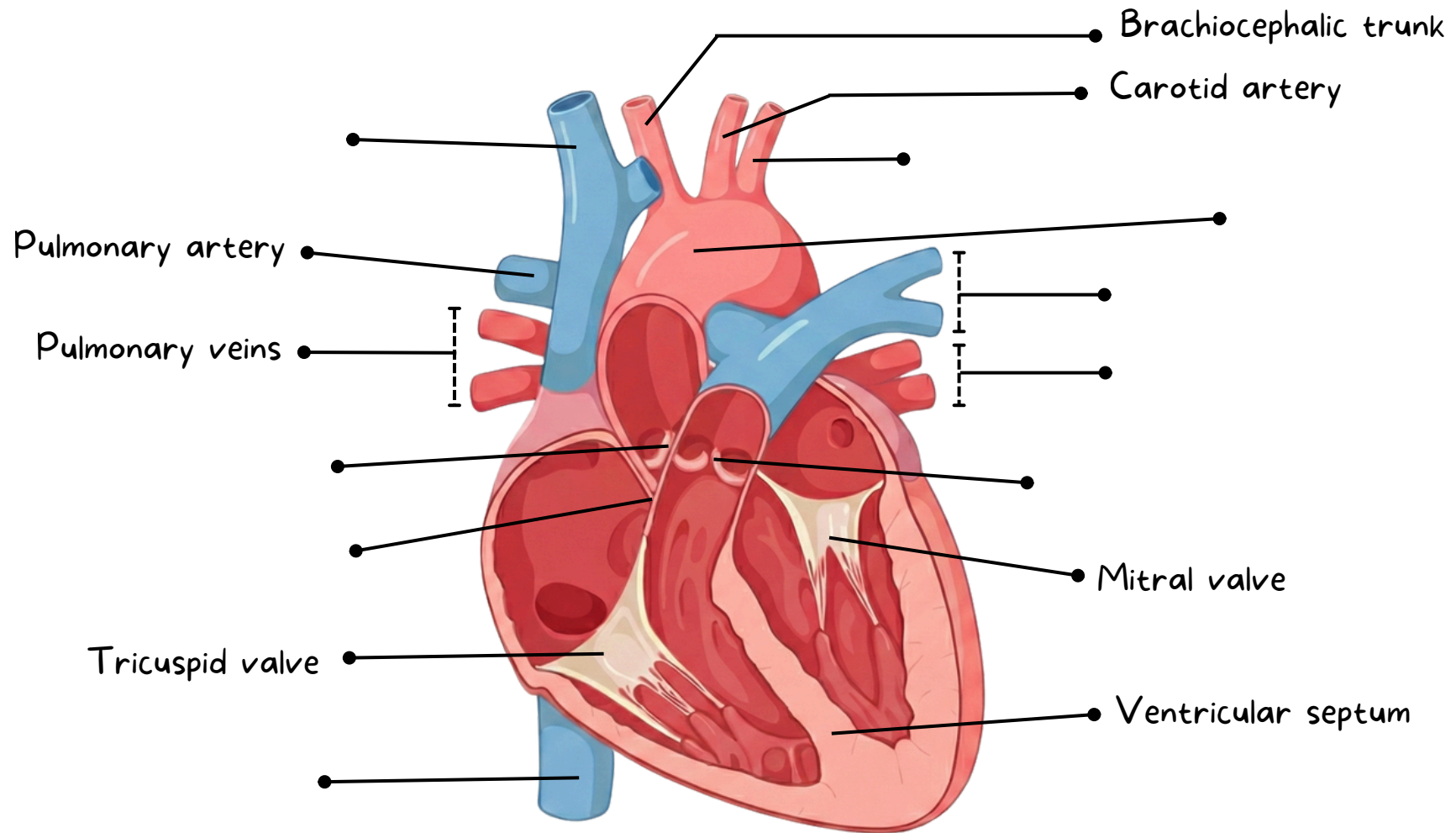
HUMAN HEART

(chambers, valves, blood flow)



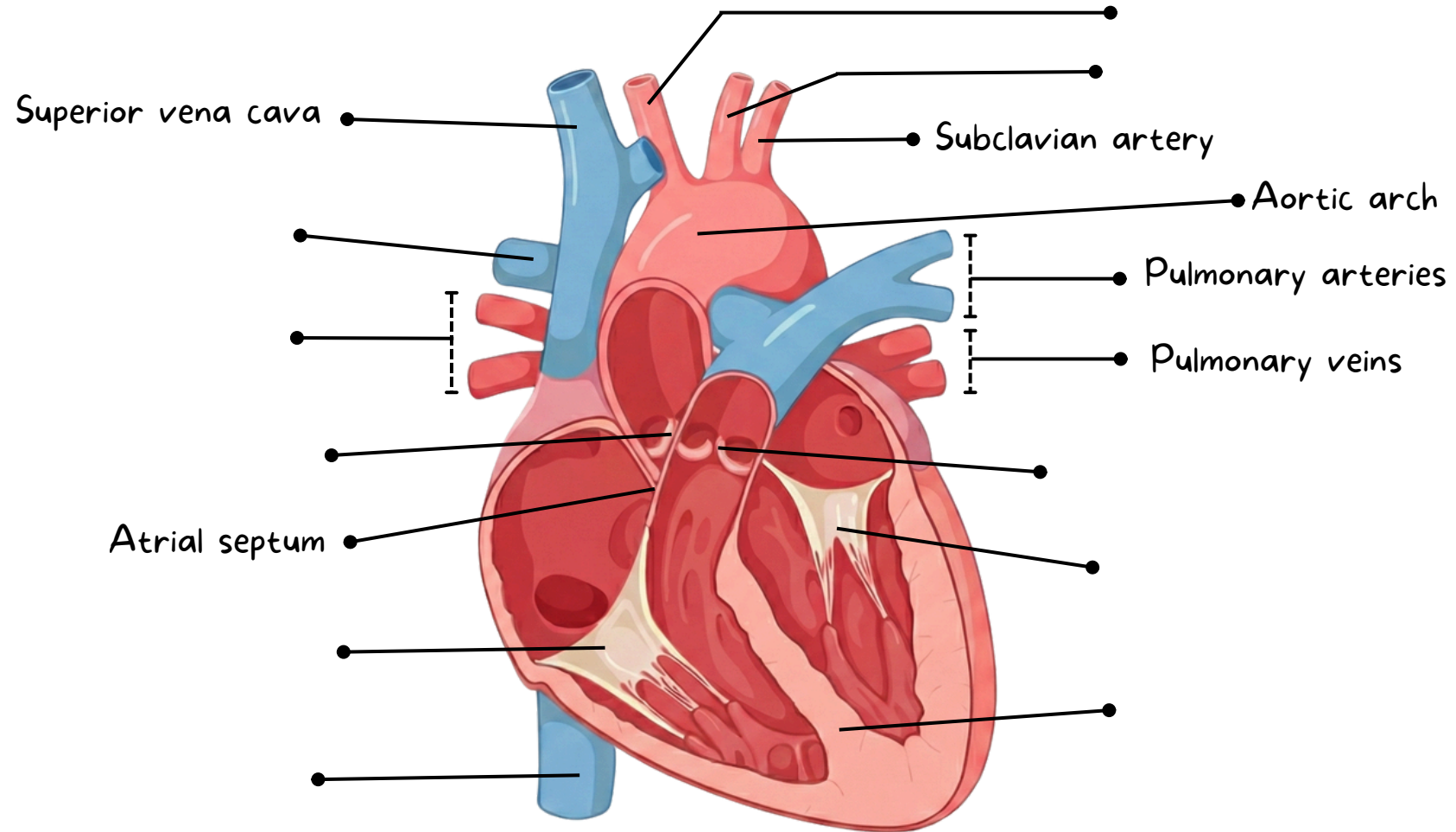
HUMAN HEART

(chambers, valves, blood flow)



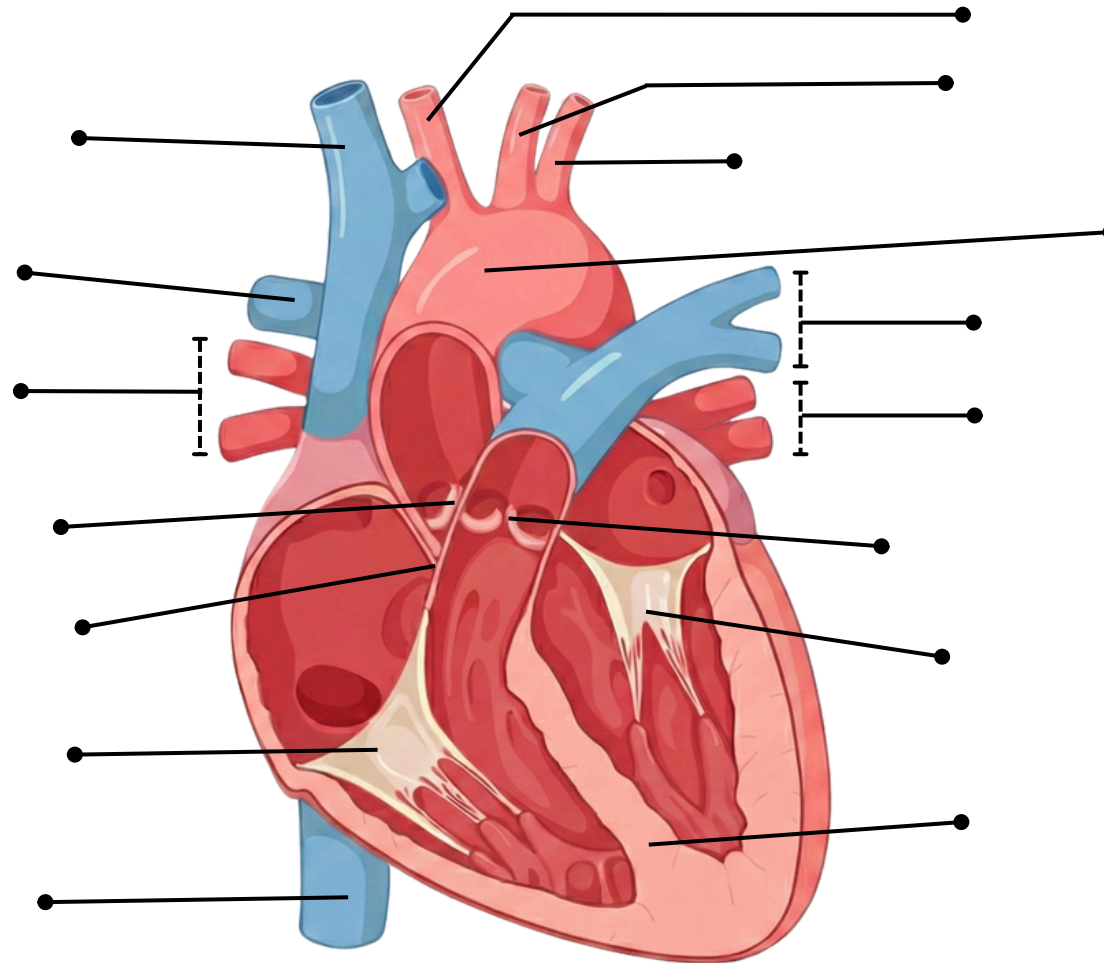
HUMAN HEART

(chambers, valves, blood flow)

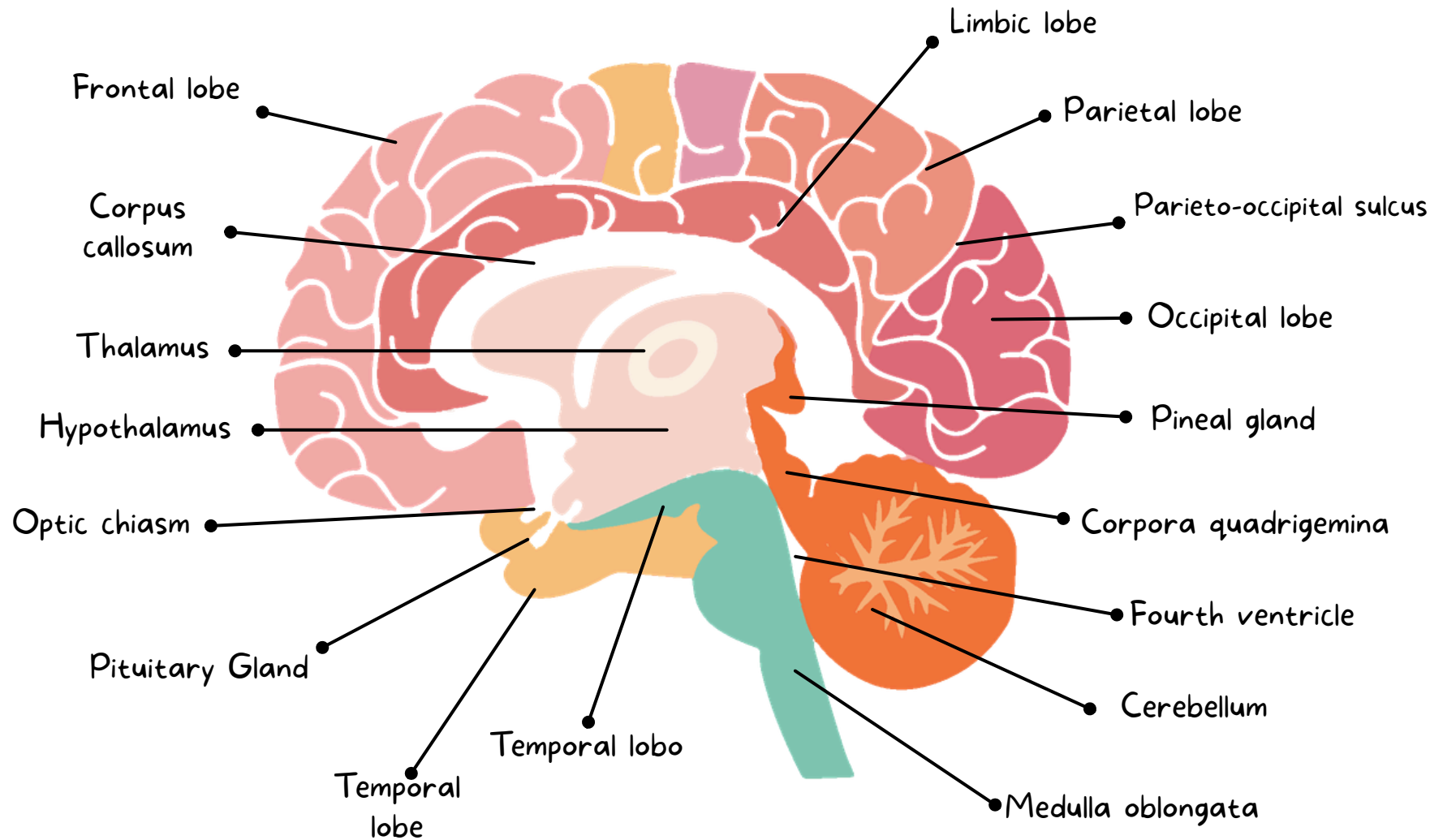


HUMAN HEART

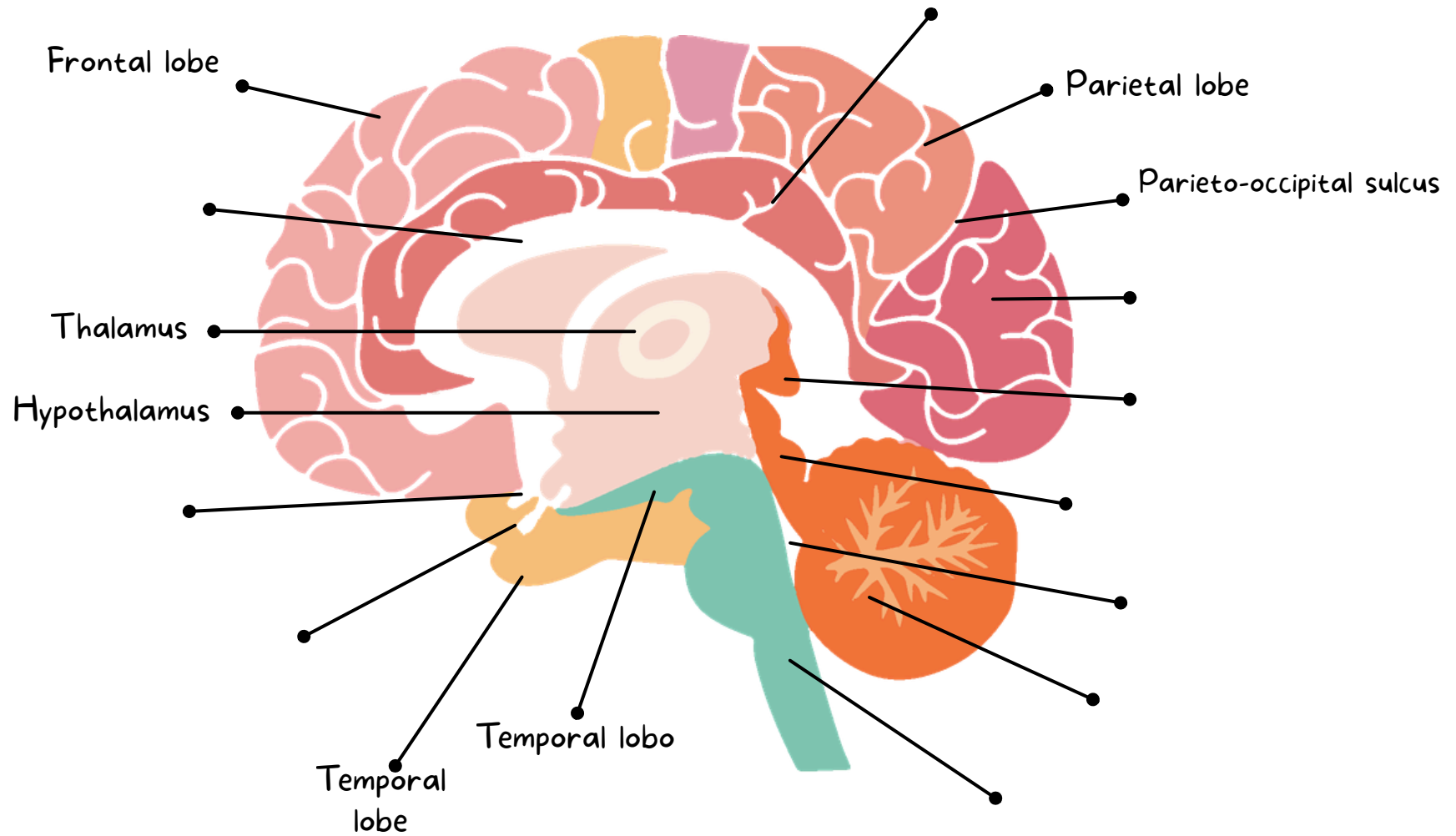
(chambers, valves, blood flow)



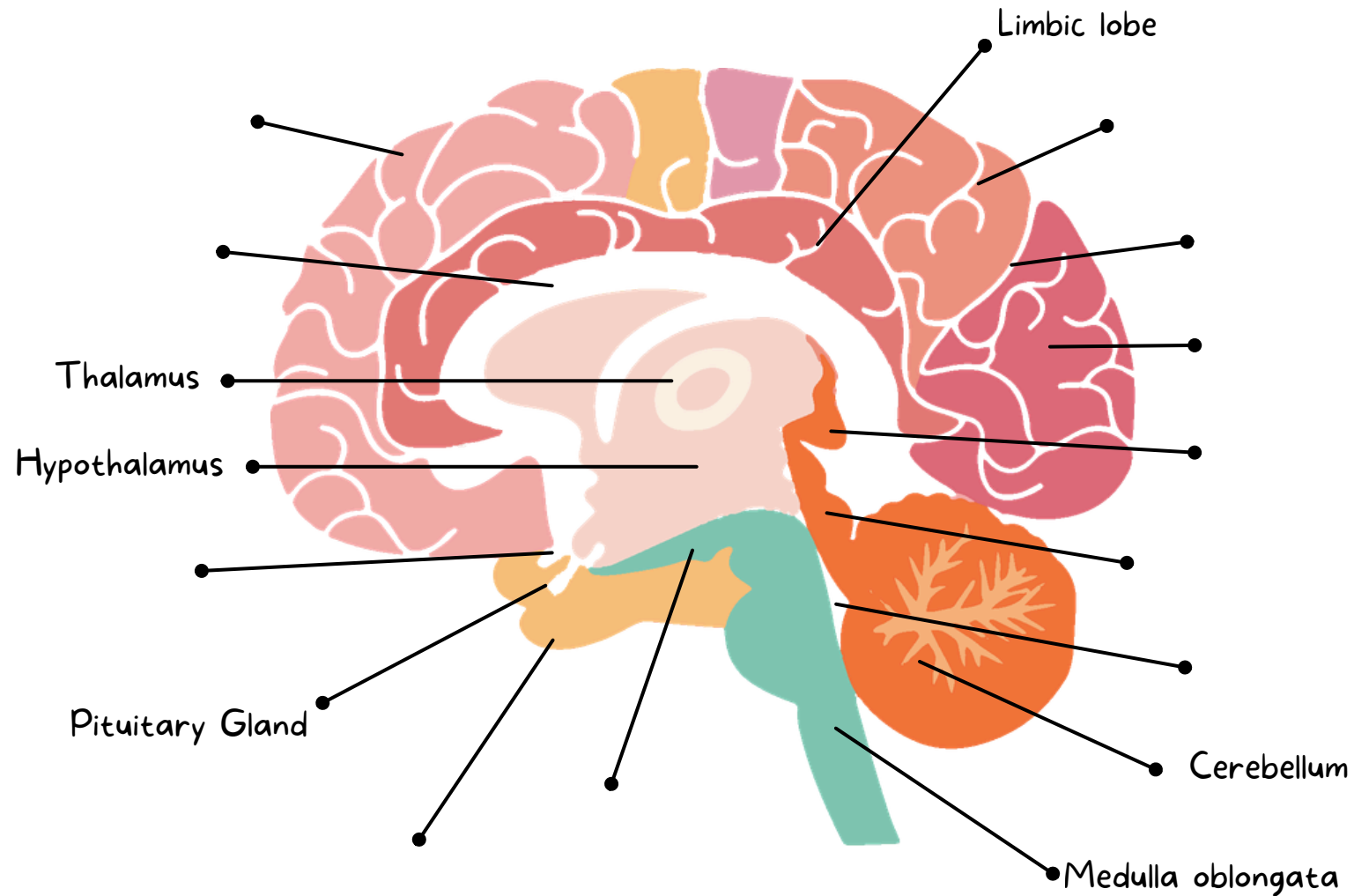
HUMAN BRAIN



HUMAN BRAIN



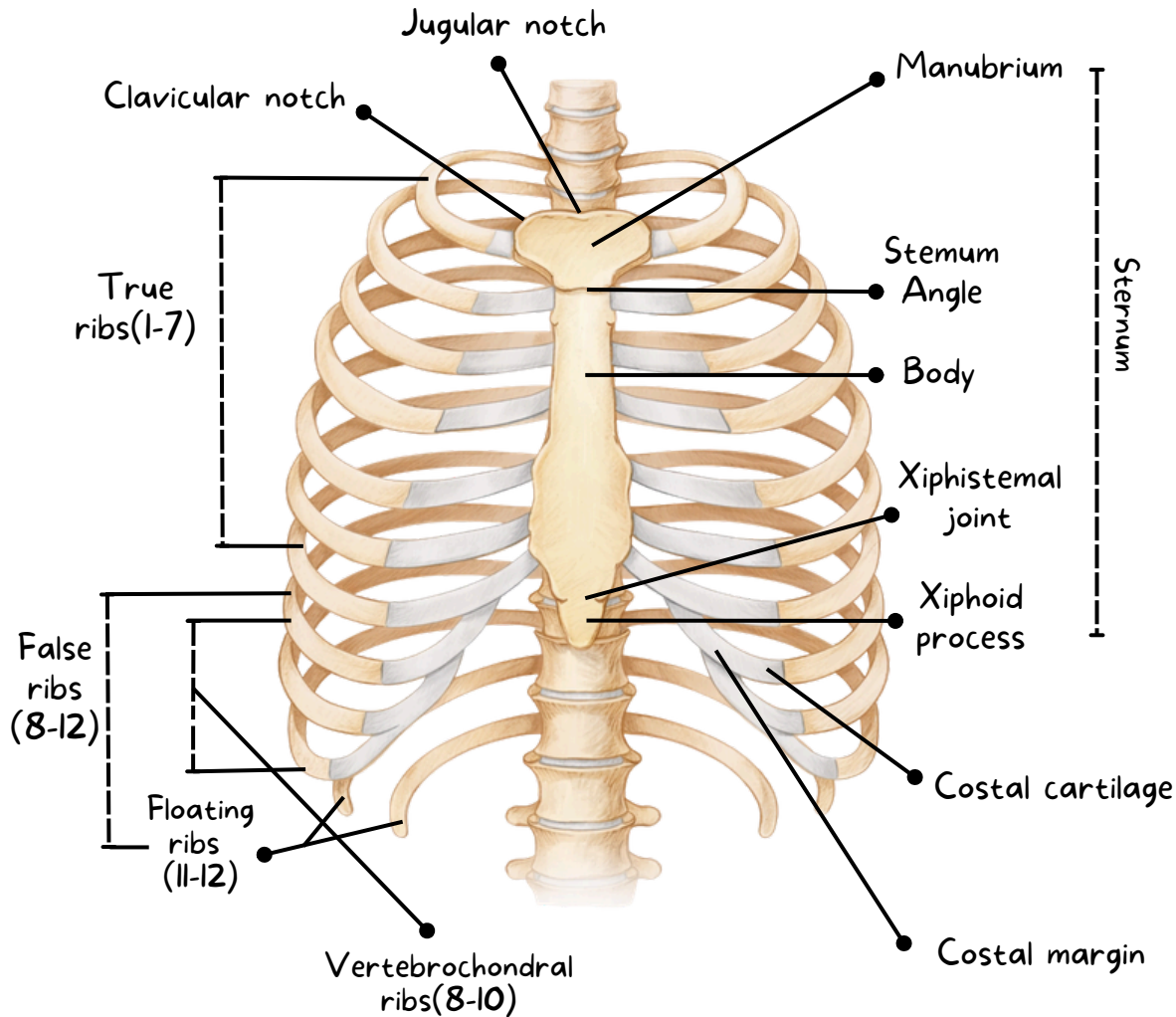
HUMAN BRAIN



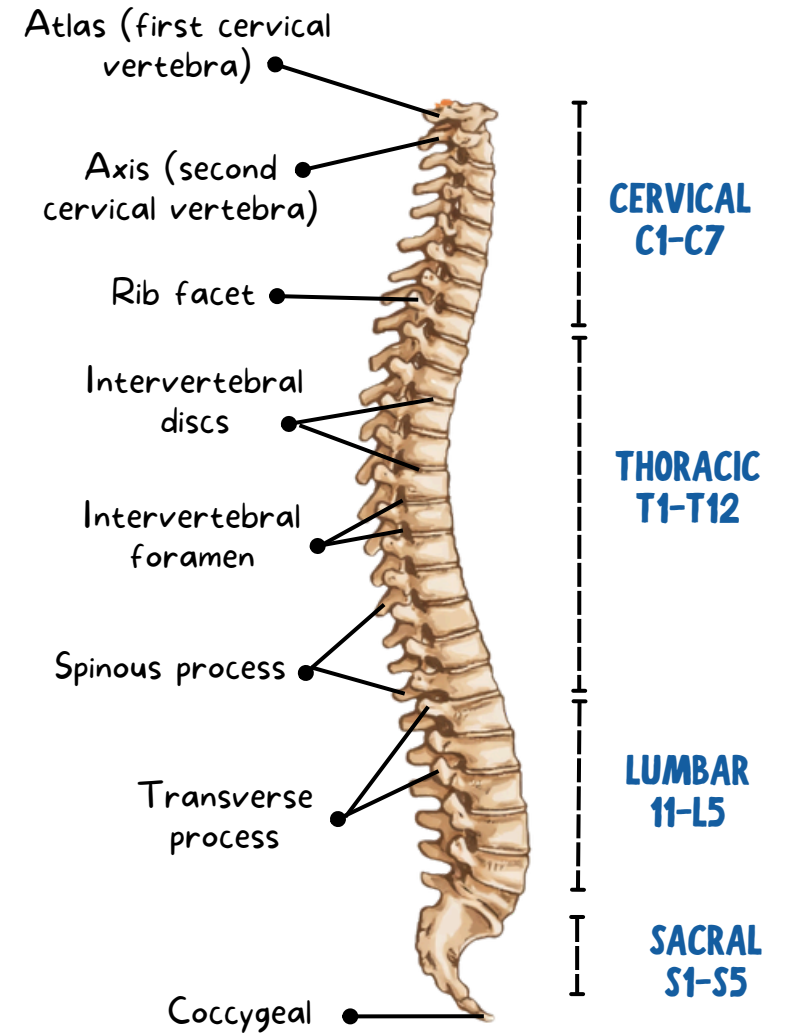
HUMAN BRAIN



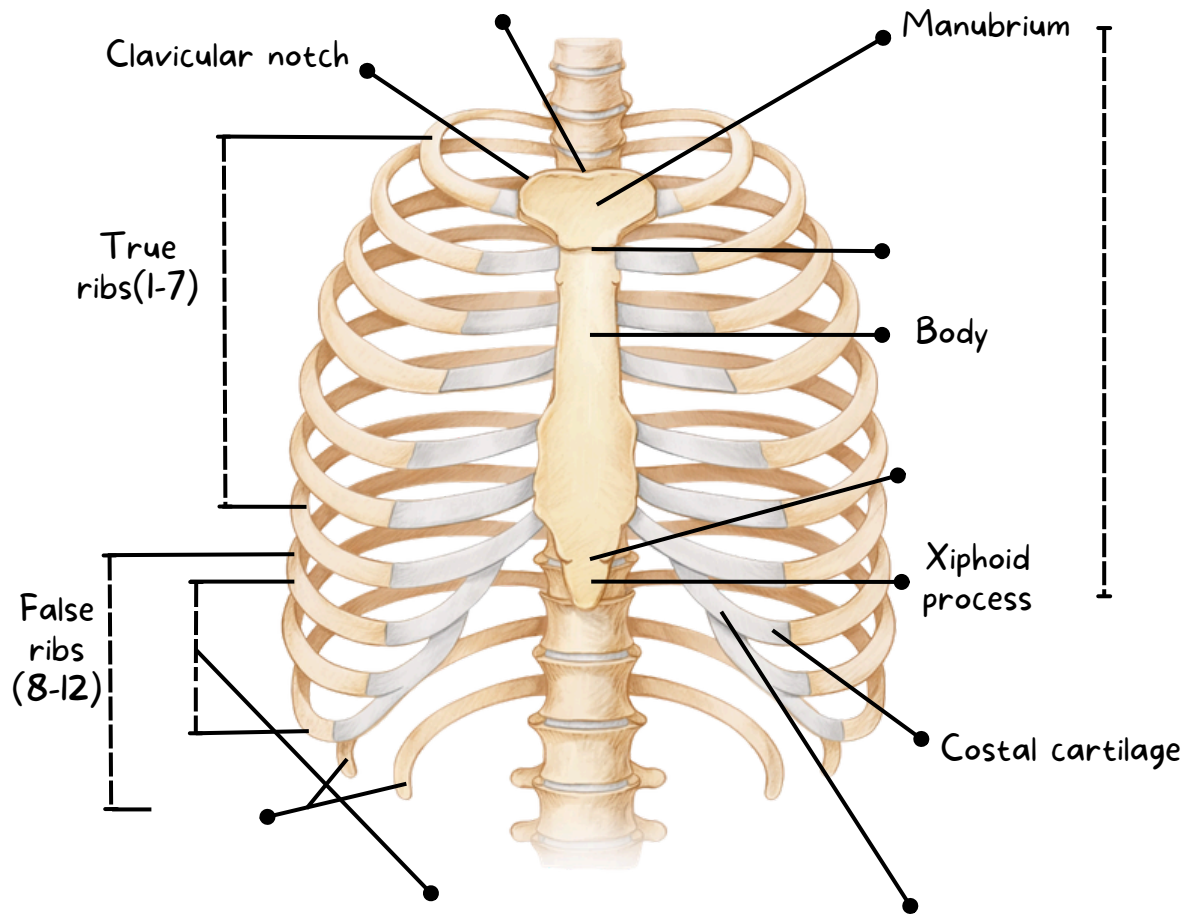
RIB CAGE



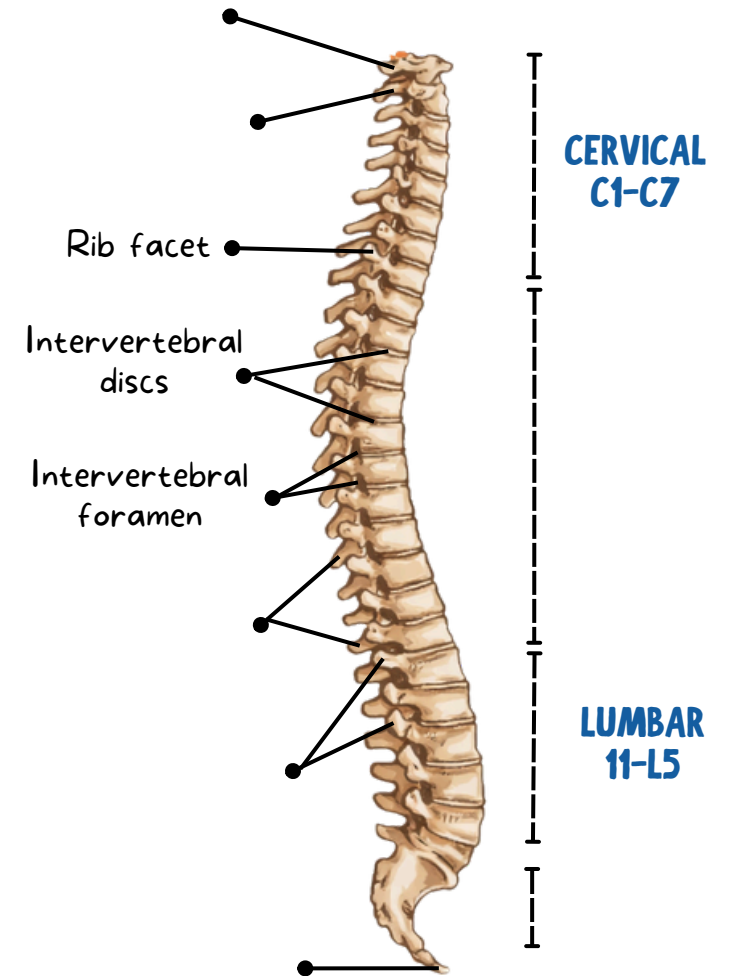
BONE OF SPINE

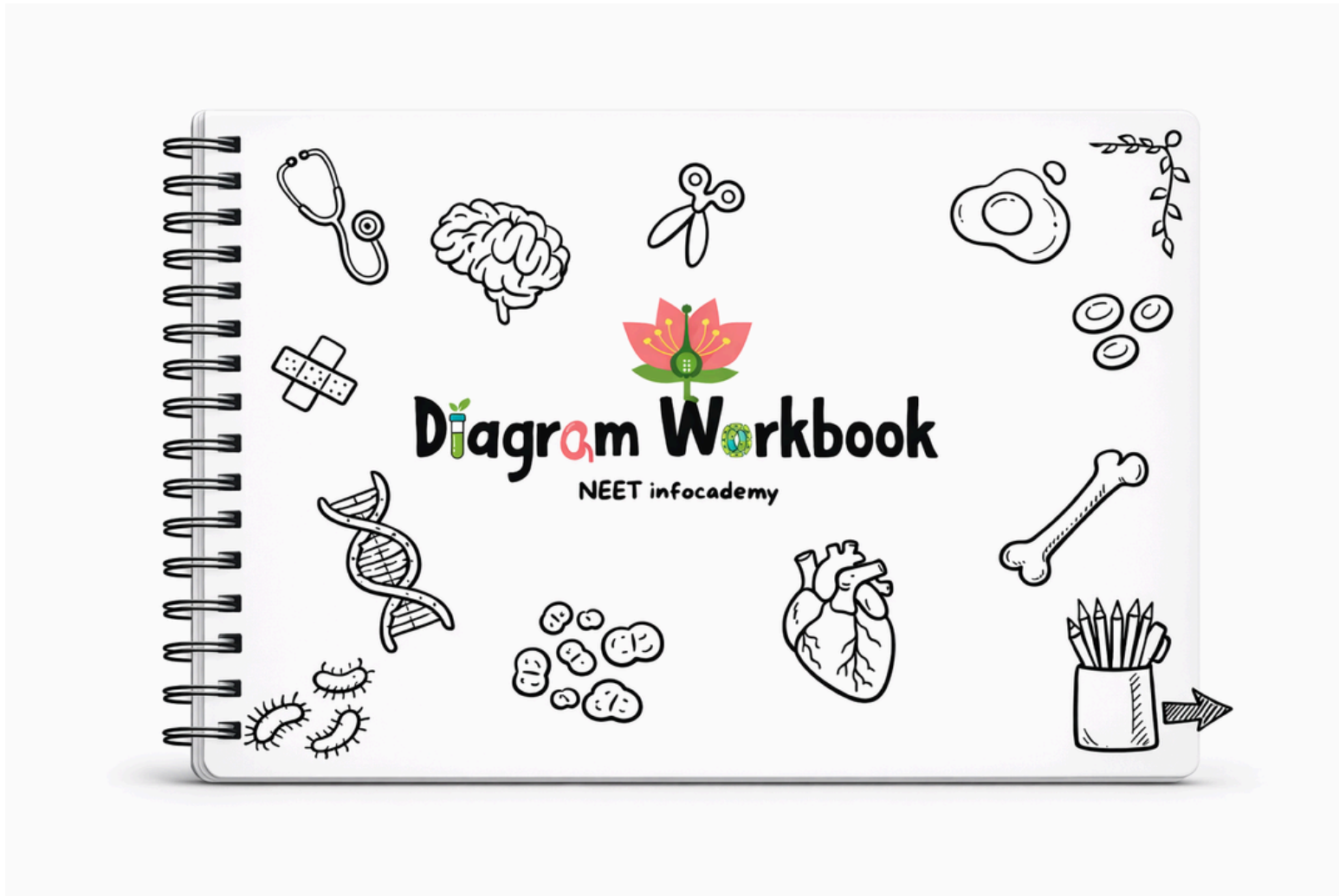


RIB CAGE



BONE OF SPINE





**GRAB THE
WORKBOOK**

CLICK HERE